



NAME _____

DATE _____

How Many Hands: Trio RACHMANINOV Waltz for six hands

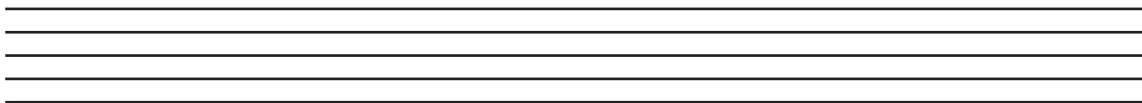
MUSIC CLEFS



Just as you write down words with letters from the alphabet, there is a way to write down music, too. Each note, or pitch, has a note name using the **musical alphabet** (A, B, C, D, E, F, G) or **solfege** (do, re, mi, fa, sol, la, ti.) These notes repeat over and over, going from low to high.

When writing music, the notes are written on a staff, which is a set of five lines and four spaces. Where a note is placed on the staff tells us what the pitch is (do, re, mi, etc.). The staff also helps to identify how high or low the sound is.

THE STAFF



Composers write a sign at the beginning of each staff called a clef. A clef tells us if a note is a high sound or a low sound.



This is a **treble clef**. It is used to write high sounds.

What animals make high sounds?



This is a **bass clef**. It is used to write low sounds.

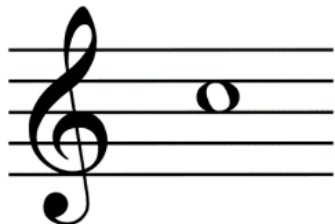
What animals make low sounds?

Can you write a bass clef on the staff above? Make sure the dots are on the correct line and space.



HIGH OR LOW?

Is the note high or low? Circle the correct answer.



HIGH LOW



HIGH LOW



HIGH LOW

WHICH CLEF?

As you listen to Evan's, Natsuko's, and Buddy's parts individually, imagine how each pianist's sheet music might look. Can you decide whose parts should be written using which clef? Are they playing high or low sounds?

Evan plays the **LOW** / **MIDDLE** / **HIGH** sounds, which is written in _____ Clef.

Natsuko plays the **LOW** / **MIDDLE** / **HIGH** sounds, which is written in _____ Clef.

Buddy plays in the **LOW** / **MIDDLE** / **HIGH** sounds, which is written in _____ Clef.

(This is a tricky question!)