



NAME \_\_\_\_\_

DATE \_\_\_\_\_

## How Many Hands: Trio RACHMANINOV Waltz for six hands

### CLEFS

When composers write music, they have only seven notes to work with. These notes repeat over and over, going from low to high. When writing music, composers use a sign at the beginning of the music called a **clef**. A clef tells us if a note is a high sound or a low sound.



This is a **treble clef**. It is used to write high sounds.

What animals make high sounds?

\_\_\_\_\_



This is a **bass clef**. It is used to write low sounds.

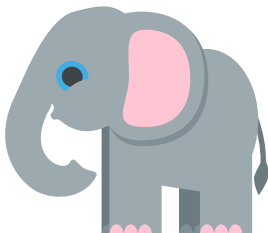
What animals make low sounds?

\_\_\_\_\_

### ANIMAL NOISE

Decide which clef each animal makes noise in, and circle the correct answer.

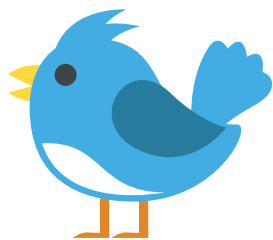
#### 1. ELEPHANT



**OR**



## 2. BIRD



OR



## 3. TIGER



OR



## 4. MONKEY



OR



### WHICH CLEF?

As you listen to Evan's, Natsuko's, and Buddy's parts individually, imagine how each pianist's sheet music might look. Can you decide whose parts should be written using which clef? Are they playing high or low sounds?

Evan plays the **LOW** / **MIDDLE** / **HIGH** sounds, which is written in \_\_\_\_\_ Clef.

Natsuko plays the **LOW** / **MIDDLE** / **HIGH** sounds, which is written in \_\_\_\_\_ Clef.

Buddy plays in the **LOW** / **MIDDLE** / **HIGH** sounds, which is written in \_\_\_\_\_ Clef.  
*(This is a tricky question!)*